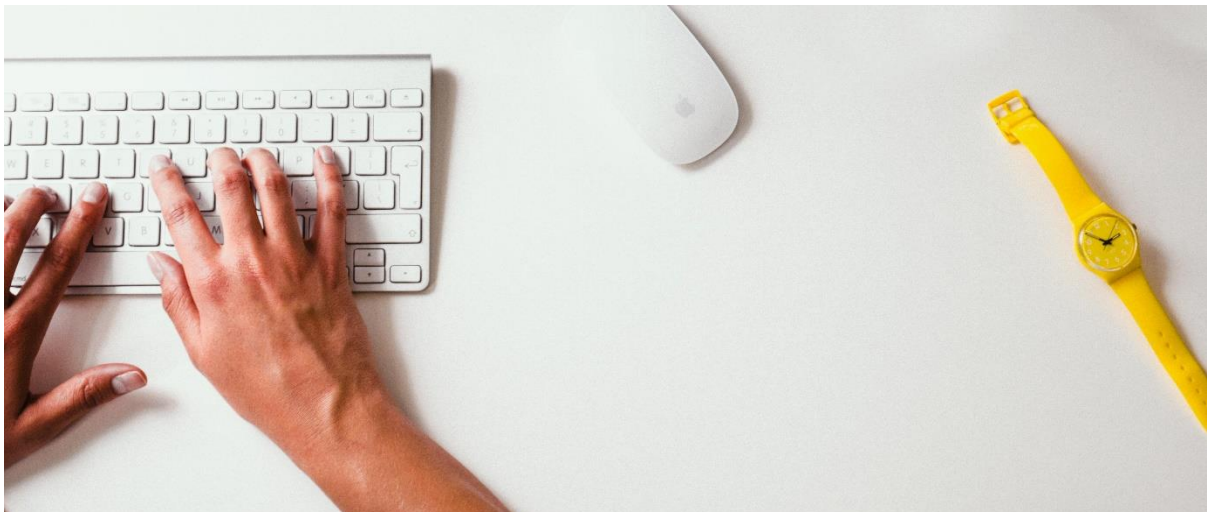




Korn Ferry Assessment of Leadership Potential (KFALP)

KFALP is a comprehensive assessment for measuring leadership potential.



+44 7976 571937
zia@ziasavel.com

ziasavel.com



Korn Ferry Assessment of Leadership Potential (KFALP)

The assessment measures an individual's Drivers, Experience, Awareness, Learning agility, Leadership traits, Capacity, and Derailment risks.

Norms are applied to provide information relative to leaders who have advanced. Leadership potential is about what could be at some point in the future, not what is currently.

By focusing on measures related to what could be, the tool has been carefully conceived and empirically designed to provide critical data about people—data proven to differentiate those who have successfully advanced from those who have not advanced.

The KFALP is designed to provide data important for individuals and organisations to consider as they think about leadership potential. It is not designed for selection of individuals into particular jobs.

KFALP is administered by Zia Savel Limited and all feedback is provided by Zia Savel.

Each area measured is delivered in the report with a statistical score and narrative which will be discussed in the one to one feedback session with the individual.

KFPAL assessment measures:

Drivers – the drive and motivation to serve as a leader.

Experience – A track record of formative experiences.

Awareness – Self- awareness of strength and development needs.

Learning agility – The ability to learn from experience.

Leadership traits – Leadership traits associated with advancement.

Capacity – Aptitude for logic and reasoning.

Derailment risks – Managed derailment risks.

Further Information

For inquiries call +44 7976571937 or email zia@ziasavel.com

Visit www.ziasavel.com for more information about the tool.

